

FOR SALE

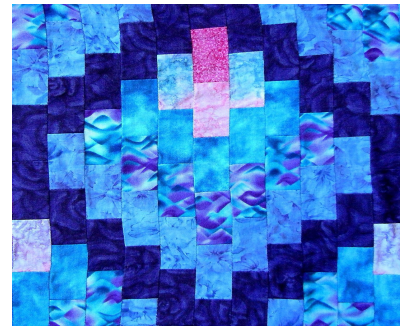
Q24 Bargello - Light and Lantern Quilt



Photos by Kris Waldman Design

Date Completed: Sep 03

Size: 45" x 57 ½" Includes Hanging Sleeve



I was fascinated with the Bargello design. This was the first quilt class I ever took (15 years after I started making quilts). I love the way this quilt looks. It looks extremely complicated, but really, it is a "strip" quilt. The hard part is keeping track of each column you are working on.